

The Trent



2200 Sq. Ft.

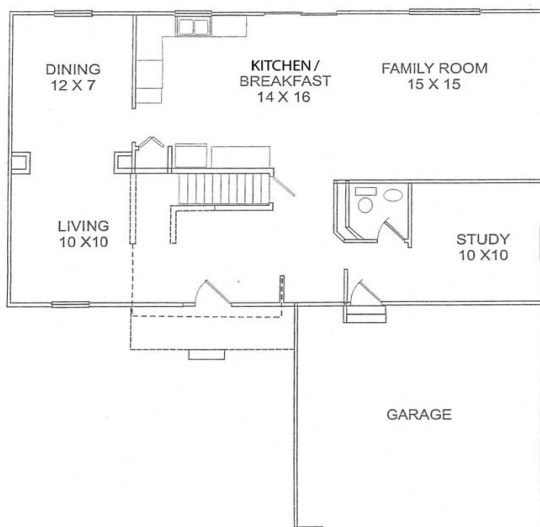
The TRENT, our traditional 4 bedroom 2.5 bath is one of our most popular & best-selling models, with a contemporary open, airy layout, that lets you entertain in lavish style!

This gorgeous home features an exciting floorplan, with a huge family style kitchen & eat-in breakfast area, complete with a private study, as well! This is a magnificent home for the discerning buyer, who appreciates quality & elegance at an incredible price! This lovely home also boasts a formal dining room and separate living room too! A grand stairway sweeping to your 3 spacious bedrooms and a magnificent master bedroom suite, great for relaxing & privacy

AS ALWAYS, "Luxury is Always Standard" & our homes come standard with architectural trim, custom Amish cabinetry, upgraded windows, solid granite countertops, fine plank flooring, stainless appliance package, your choice of all colors, professional landscaping, CUSTOMIZING AT NO CHARGE & simply so much more!

See Why Over 5,000 Families Chose Us to Build Their Dream Home!

FREE Granite Countertops FREE Plank Flooring FREE Brick Front FREE Central Air FREE Stainless



MAIN FLOOR



SECOND FLOOR



Room Sizes & Square Footage Approximate & are not Warranted. Preliminary Plan Subject to Change! Elevations are an Artist's Conception